



# POLARIS

THE WORKPLACE FOR CONNECTION

Floor Plans





Polaris is more  
than a workplace.  
It's where connections  
shape success.

36,200  
sqm office  
space

+  
3,800  
people  
capacity

2,550  
sqm shared  
amenities

1,500  
private  
outdoor areas



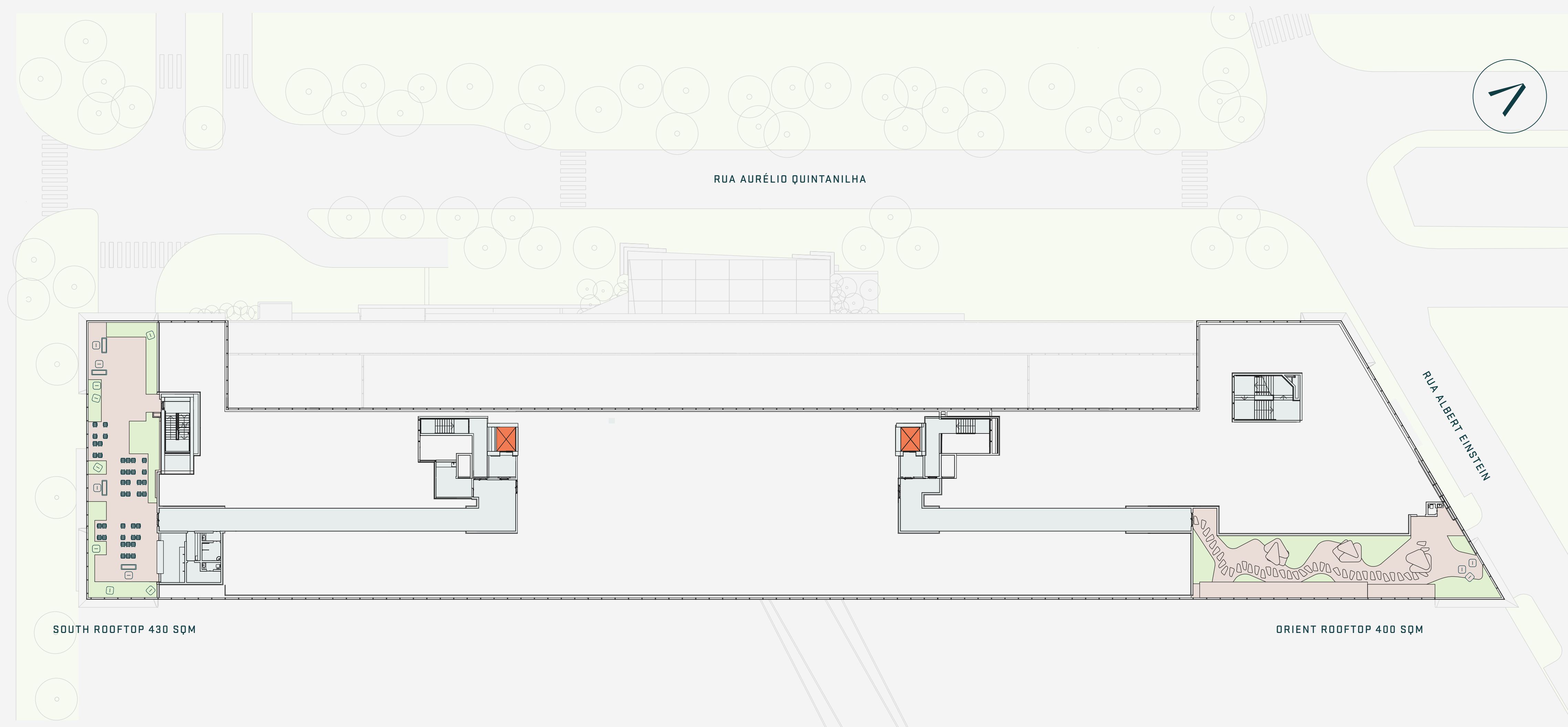


# Rooftop

## Amenities

OUTDOOR SPACE  
830 sqm

- Outdoor Space
- Lifts
- Landscaping
- Core



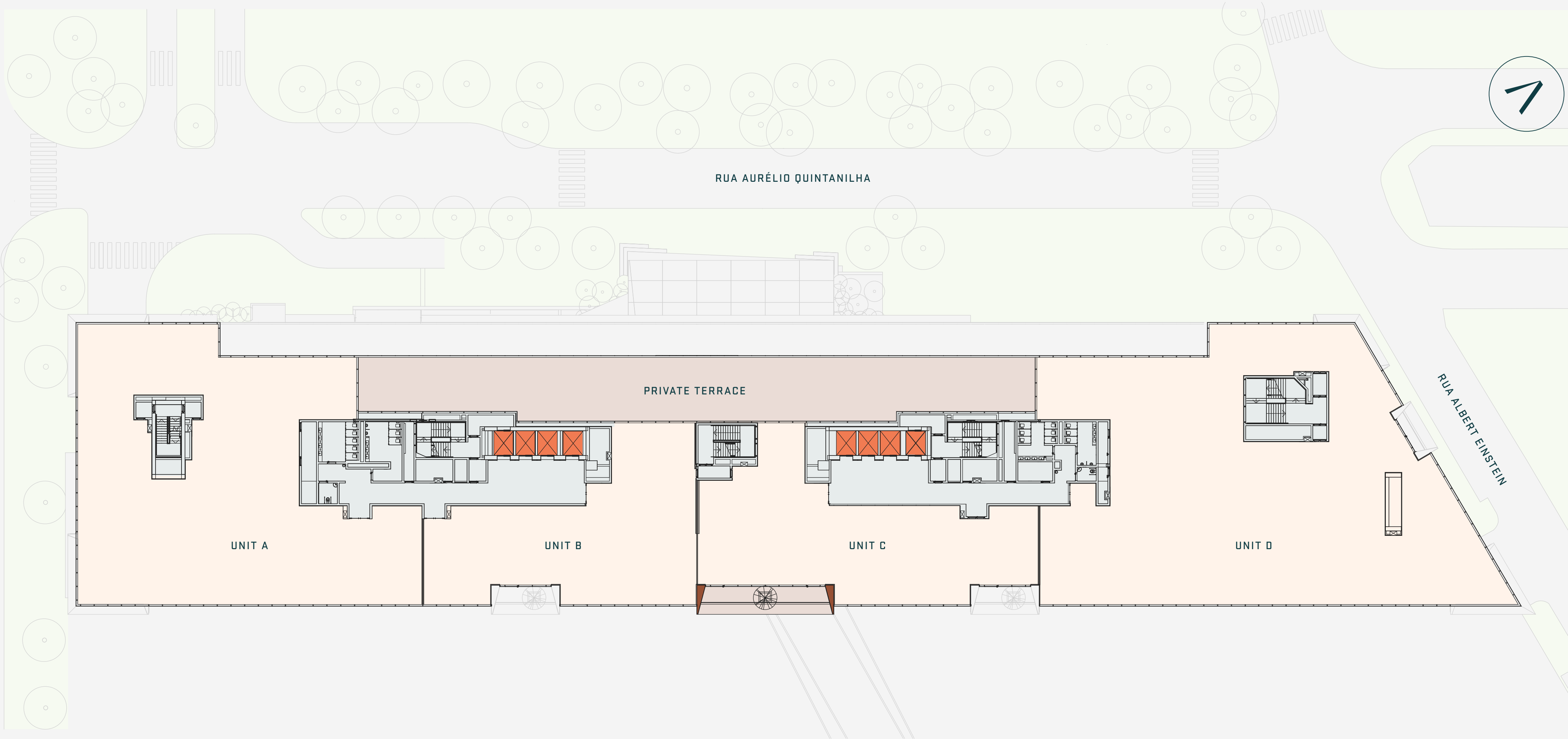
# 9th Floor

AREA  
4,433 sqm

OUTDOOR SPACE  
594 sqm

UNIT A	1,338.48 sqm
UNIT B	631.15 sqm
UNIT C	691.07 sqm
UNIT D	1,772.31 sqm

- Office
- Outdoor Space
- Lifts
- Landscaping
- Core





# 9th Floor

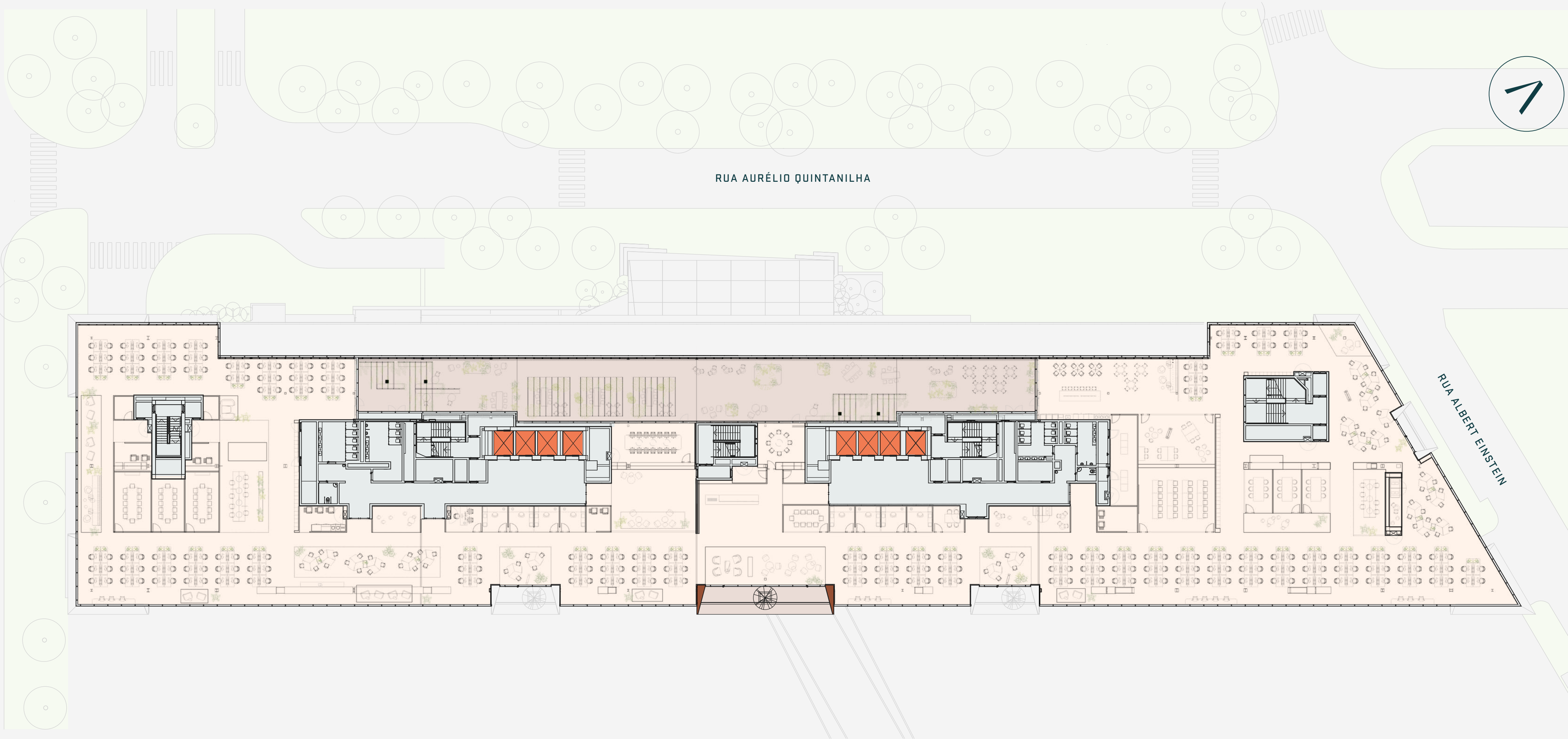
Space Plan – Single Tenant Example

AREA  
4,433 sqm

OUTDOOR SPACE  
594 sqm

ALL UNITS 4,433.01 sqm

- Terrace
- Lifts
- Landscaping
- Core





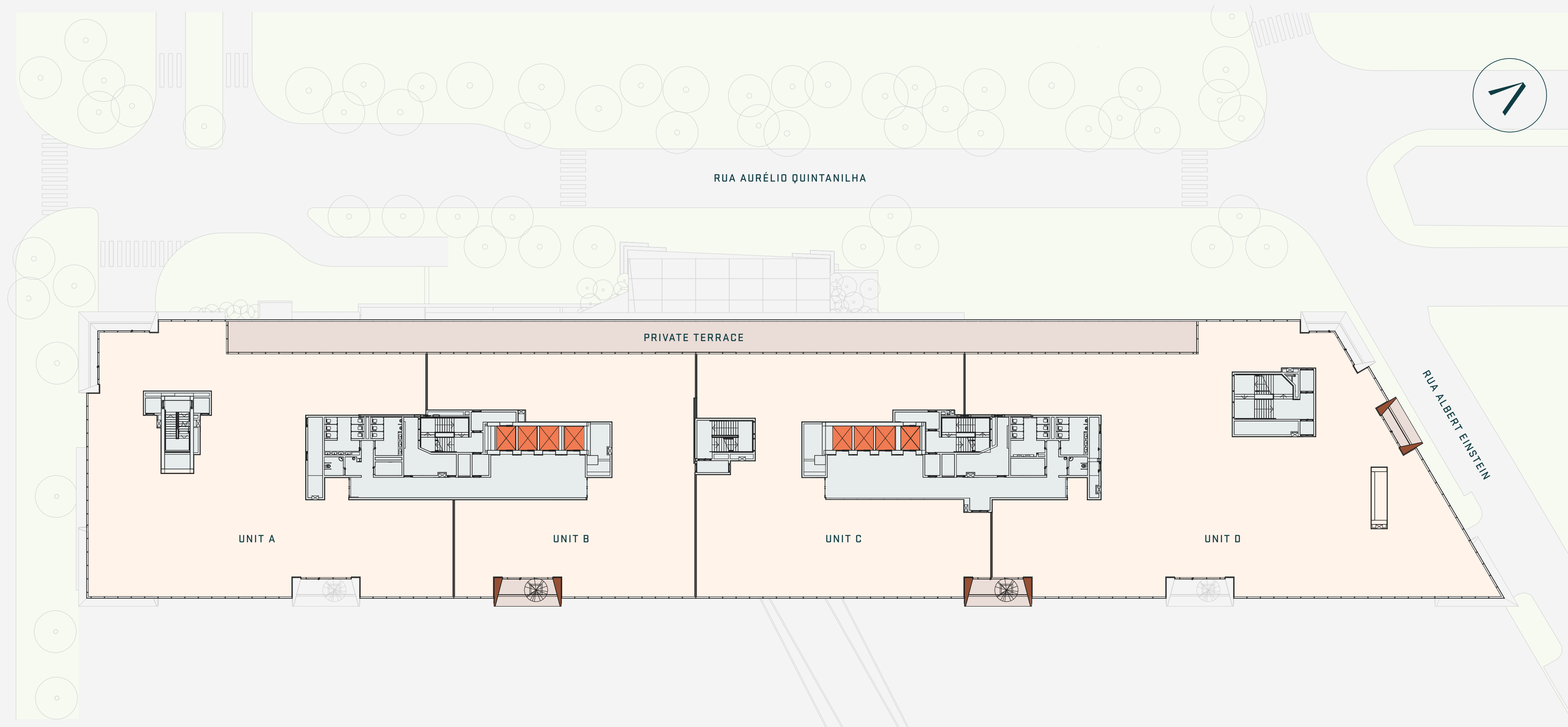
# 8th Floor

AREA  
5,243 sqm

OUTDOOR SPACE  
485 sqm

UNIT A	1,439.60 sqm
UNIT B	912.49 sqm
UNIT C	1,011.77 sqm
UNIT D	1,878.67 sqm

- Office
- Outdoor Space
- Lifts
- Landscaping
- Core





# 7th Floor

AREA

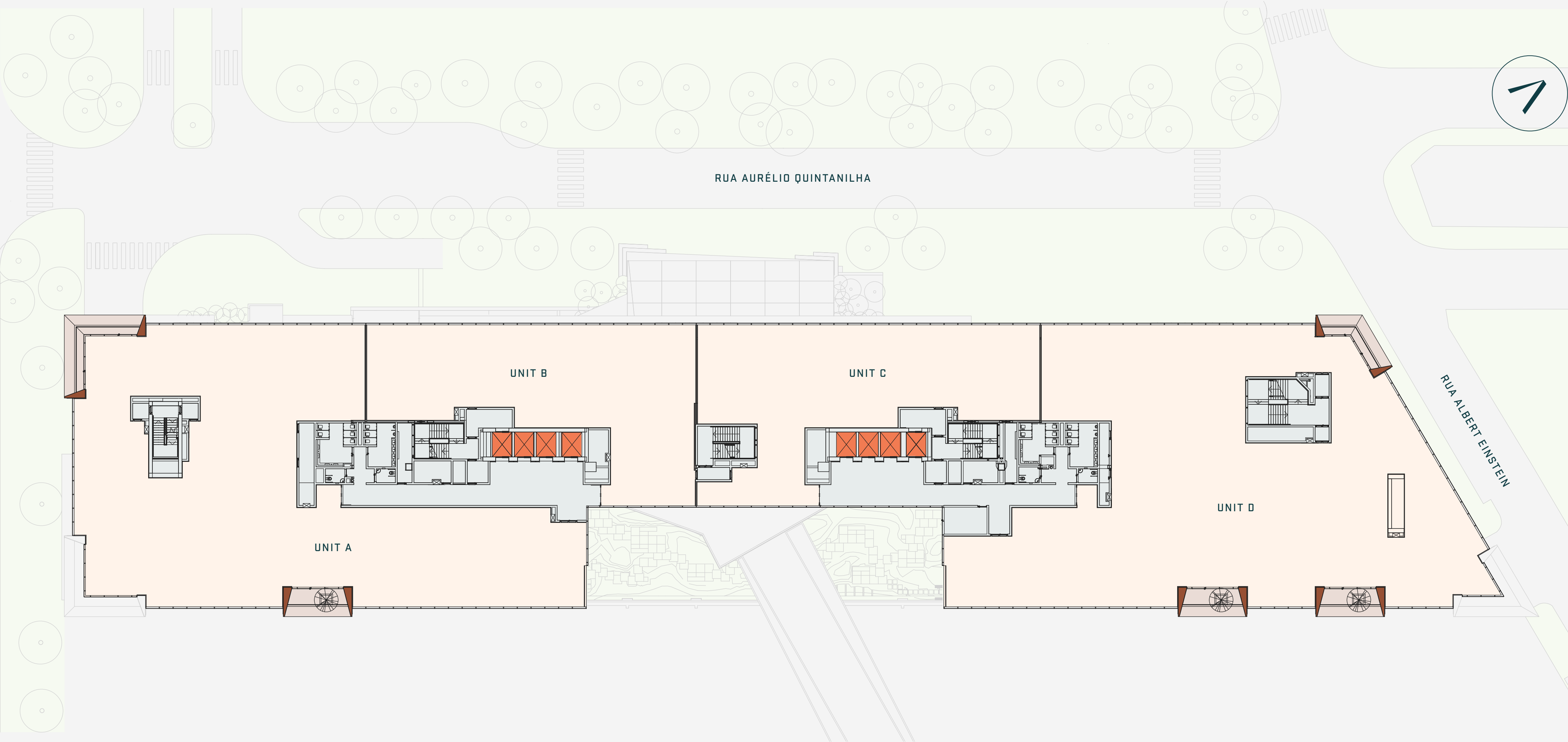
5,124 sqm

OUTDOOR SPACE

69 sqm

UNIT A	1,687.81 sqm
UNIT B	740.21 sqm
UNIT C	753.48 sqm
UNIT D	1,942.93 sqm

- Office
- Outdoor Space
- Lifts
- Landscaping
- Core





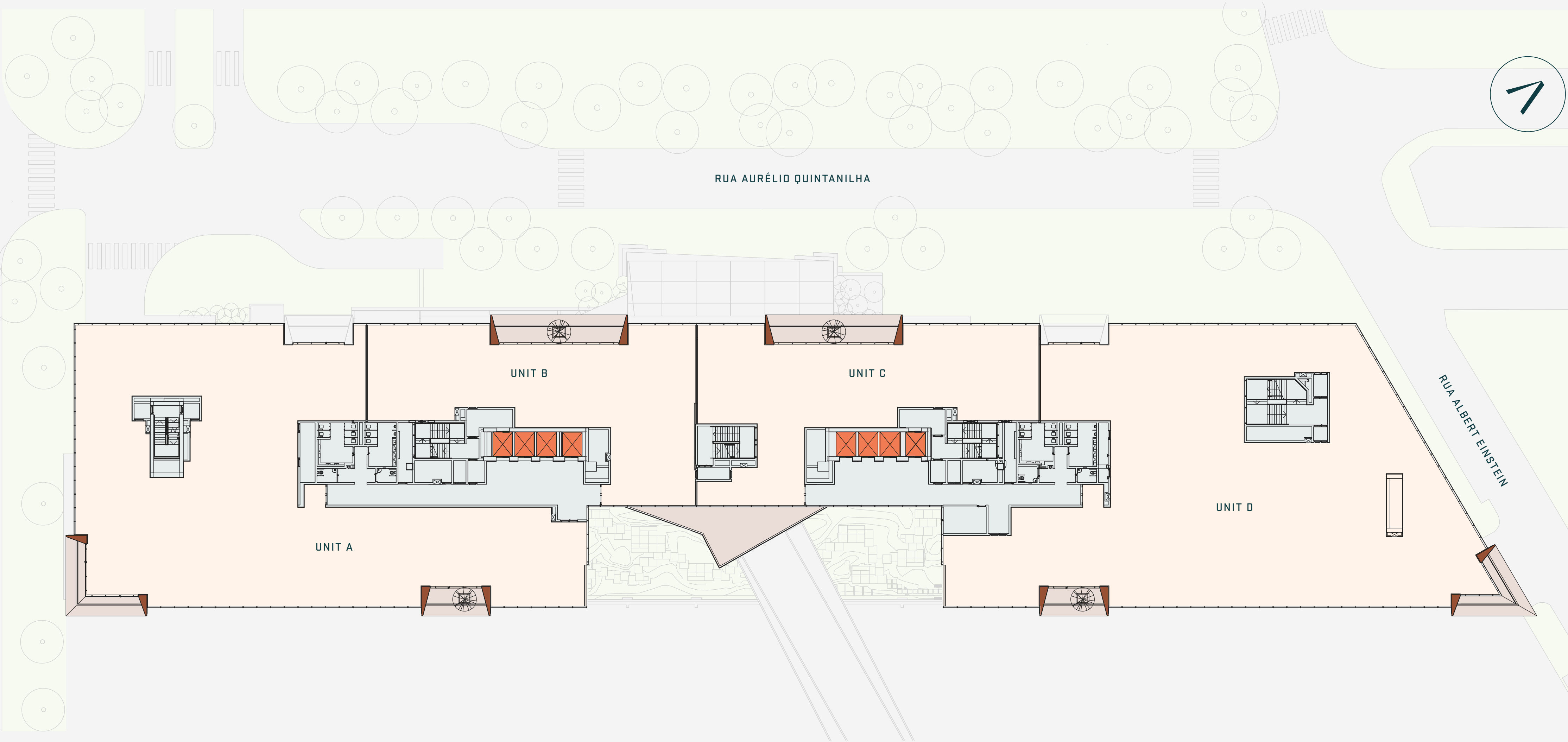
# 6th Floor

AREA  
5,078 sqm

OUTDOOR SPACE  
185 sqm

UNIT A	1,692.27 sqm
UNIT B	698.34 sqm
UNIT C	707.30 sqm
UNIT D	1,979.82 sqm

- Office
- Outdoor Space
- Lifts
- Landscaping
- Core





# 6th Floor

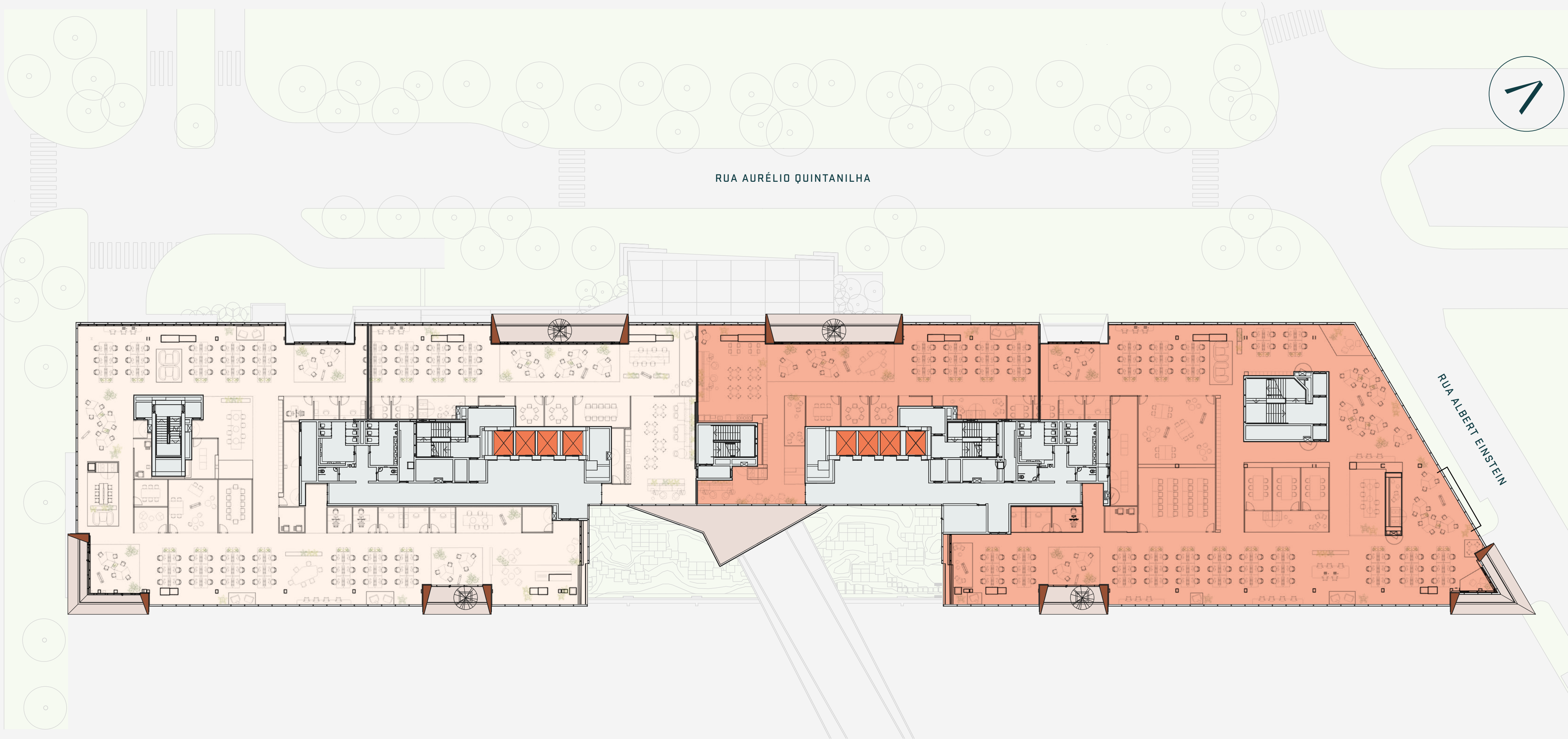
Space Plan – Two Tenants Example

AREA  
5,078 sqm

OUTDOOR SPACE  
185 sqm

UNITS A & B	2,390.61 sqm
UNITS C & D	2,687.12 sqm

- Terrace
- Lifts
- Landscaping
- Core







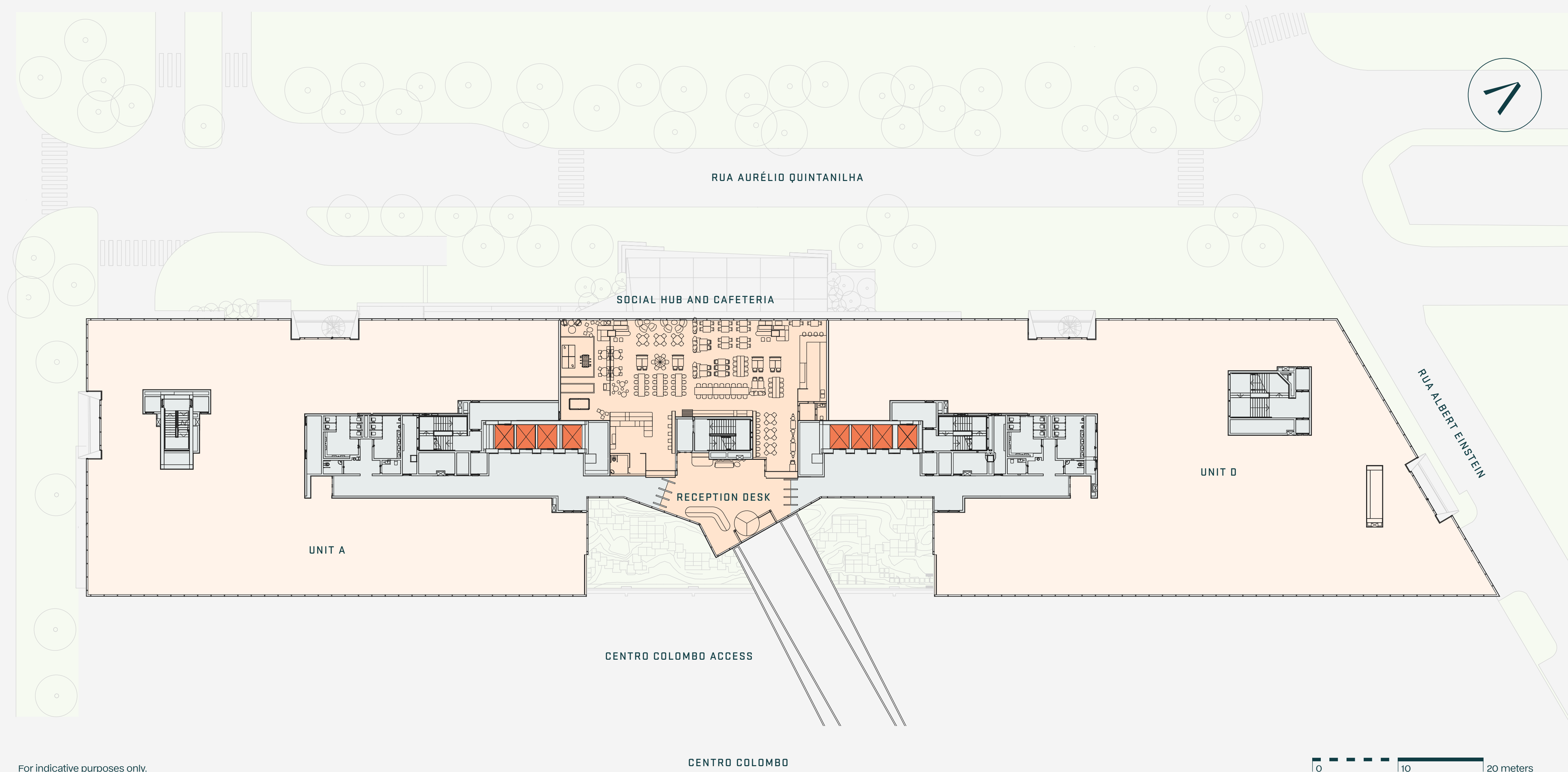
# 5th Floor

Amenities

AREA  
4,453 sqm

UNIT A	2,068.08 sqm
UNIT D	2,384.77 sqm

- Office
- Lifts
- Landscaping
- Core





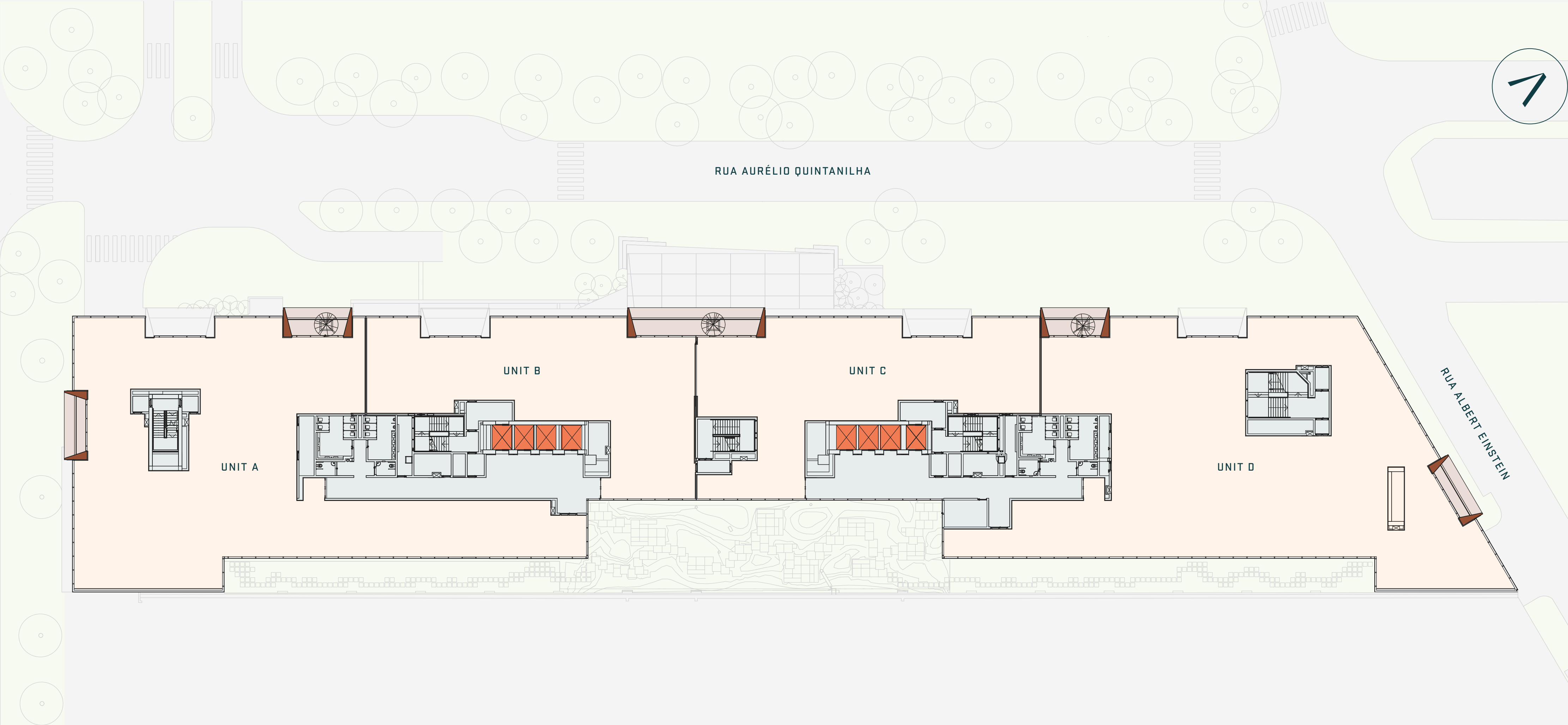
# 4th Floor

AREA  
4,452 sqm

OUTDOOR SPACE  
73 sqm

UNIT A	1,404.65 sqm
UNIT B	701.37 sqm
UNIT C	709.53 sqm
UNIT D	1,636.86 sqm

- Office
- Outdoor Space
- Lifts
- Landscaping
- Core





# 3rd Floor

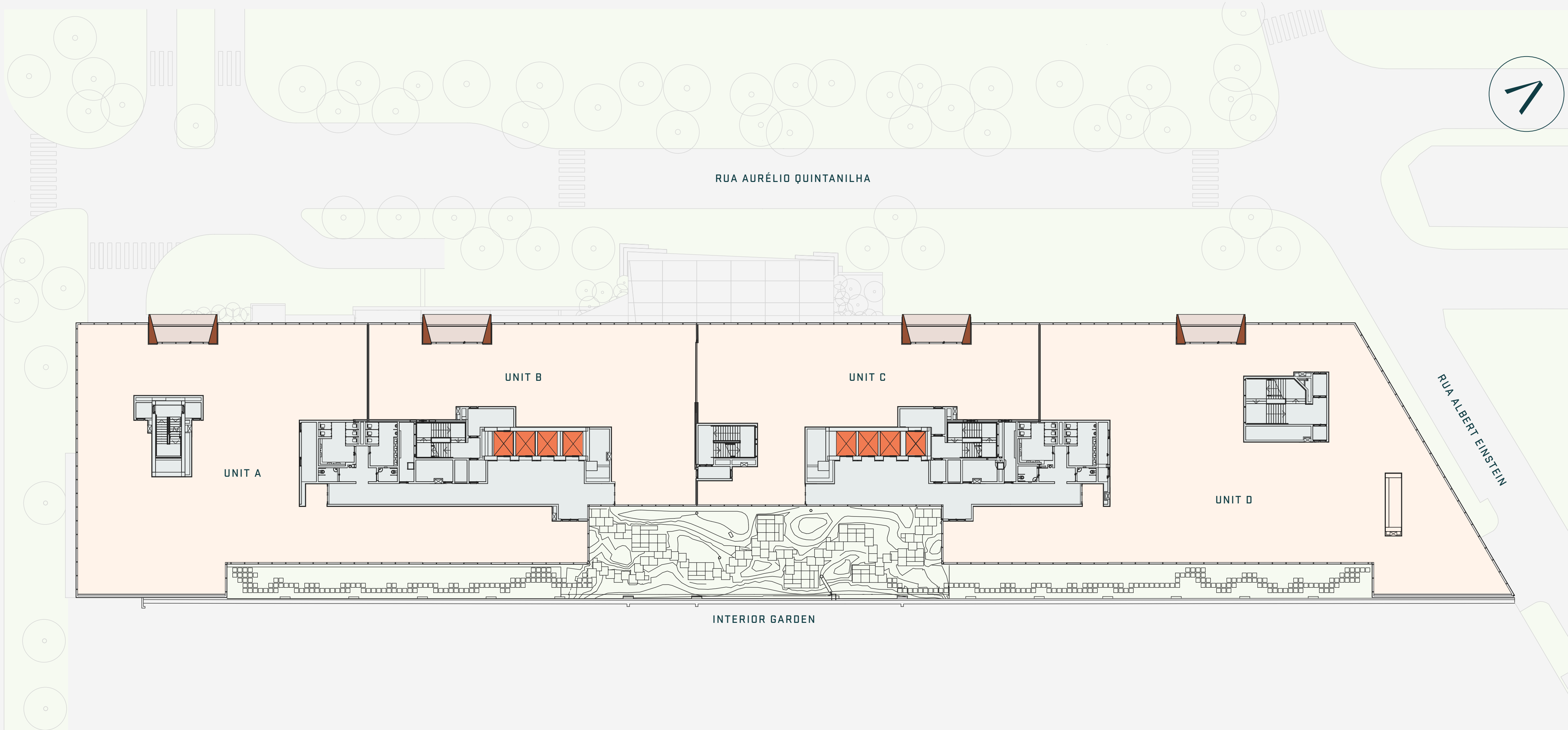
AREA  
4,556 sqm

OUTDOOR SPACE  
53 sqm

INTERIOR GARDEN  
787 sqm

UNIT A	1,436.80 sqm
UNIT B	711.82 sqm
UNIT C	740.51 sqm
UNIT D	1,667.08 sqm

- Office
- Outdoor Space
- Lifts
- Landscaping
- Core





# 3rd Floor

Space Plan – Four Tenants Example

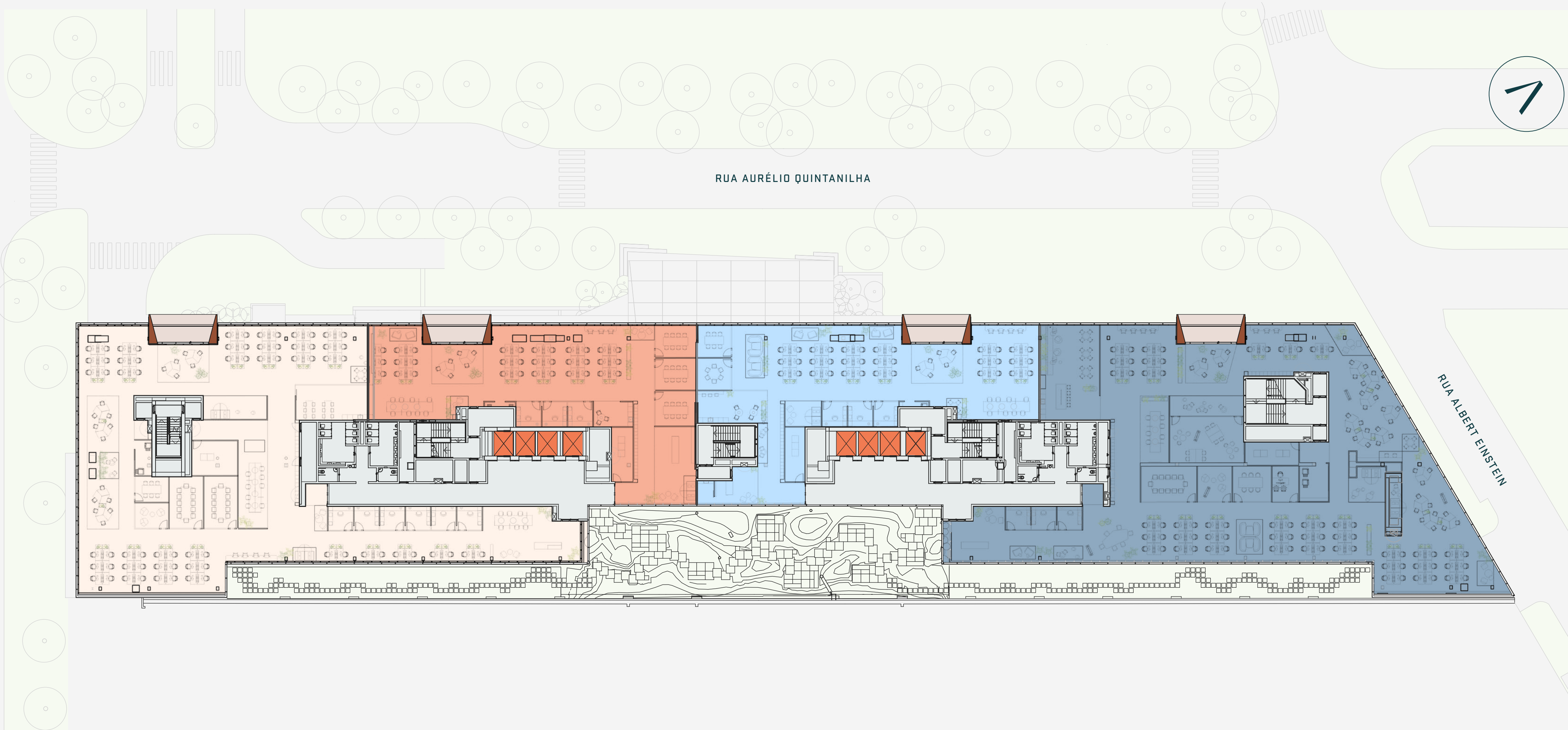
AREA  
4,556 sqm

OUTDOOR SPACE  
53 sqm

INTERIOR GARDEN  
787 sqm

UNIT A	1,436.80 sqm
UNIT B	711.82 sqm
UNIT C	740.51 sqm
UNIT D	1,667.08 sqm

Terrace	
Lifts	
Landscaping	
Core	



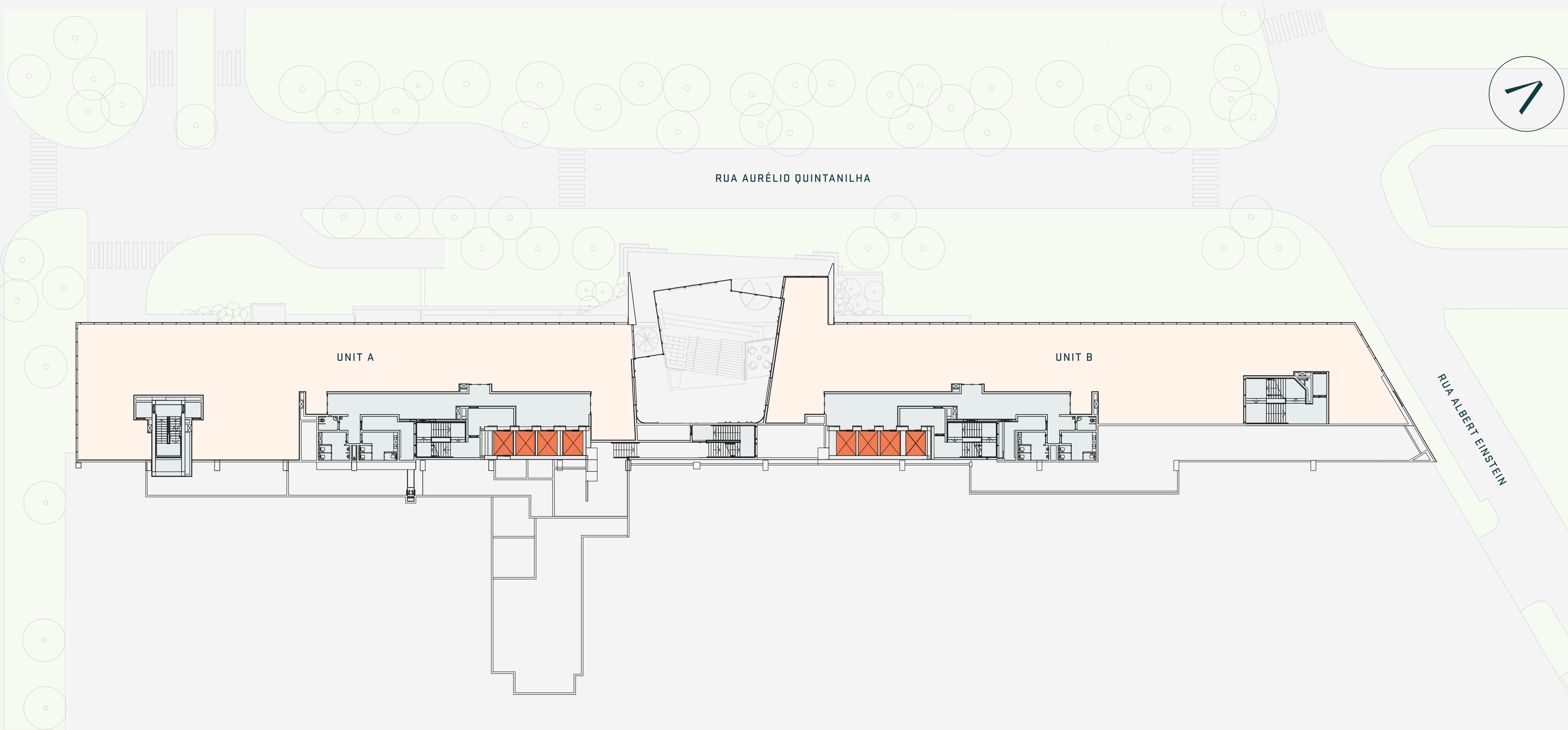


# 2nd Floor

AREA  
1,959 sqm

UNIT A	994.61 sqm
UNIT B	963.87 sqm

- Office
- Lifts
- Landscaping
- Core





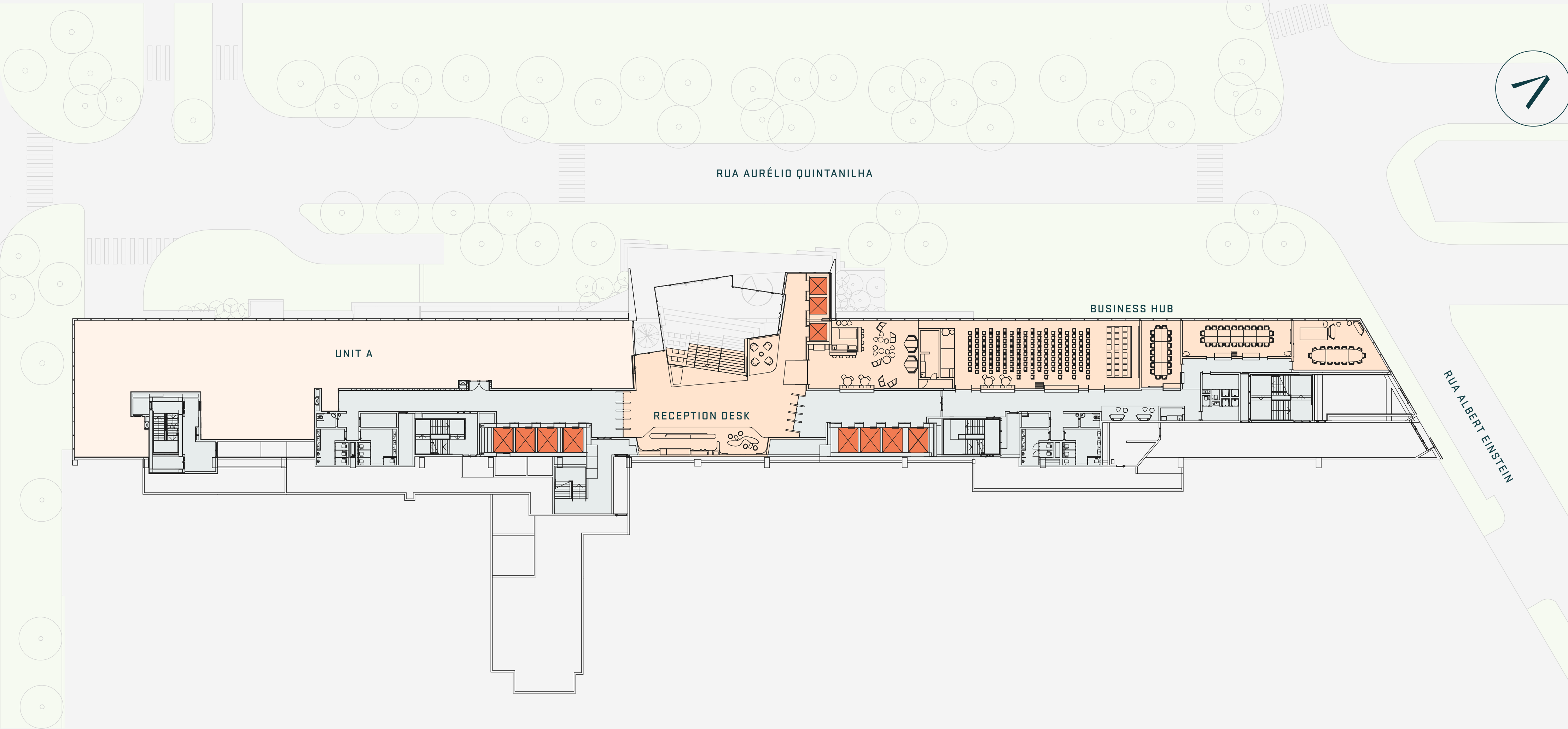
# 1st Floor

Amenities

AREA  
918 sqm

UNIT A 917.66 sqm

- Office
- Lifts
- Landscaping
- Core

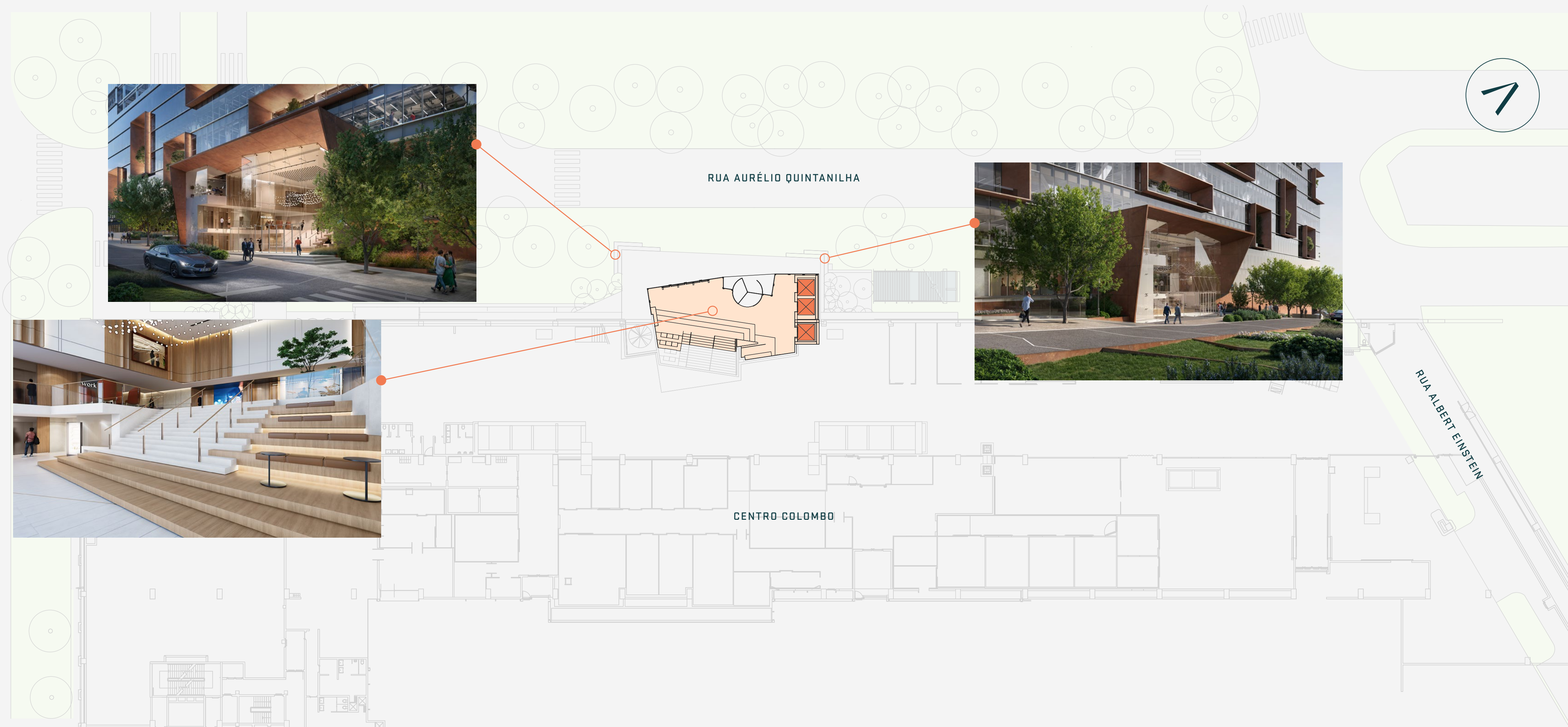




# Ground Floor

## Entrance

- Lifts ■
- Landscaping ■
- Core ■

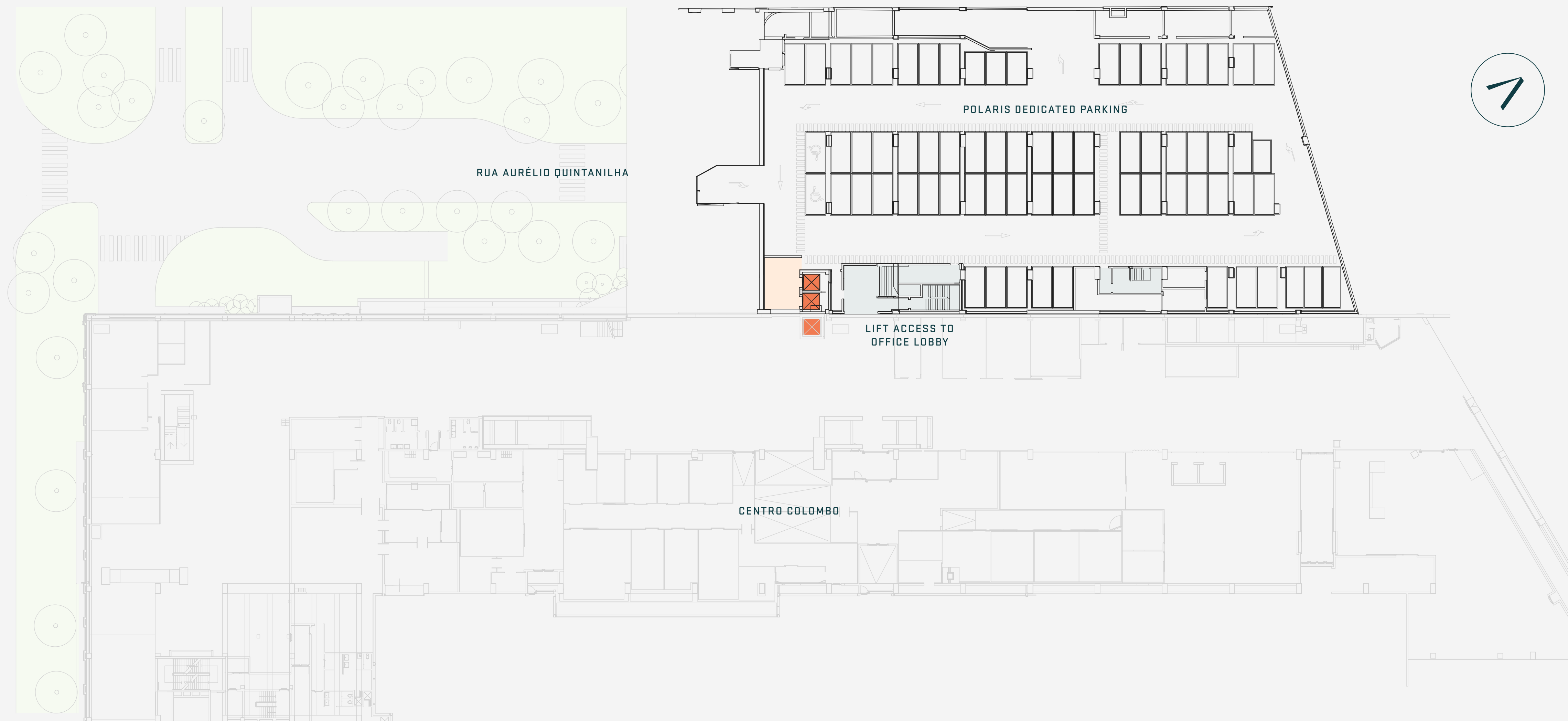




# Lower Ground Parking

SPACES  
70

- Parking Lobby
- Lifts
- Landscaping
- Core



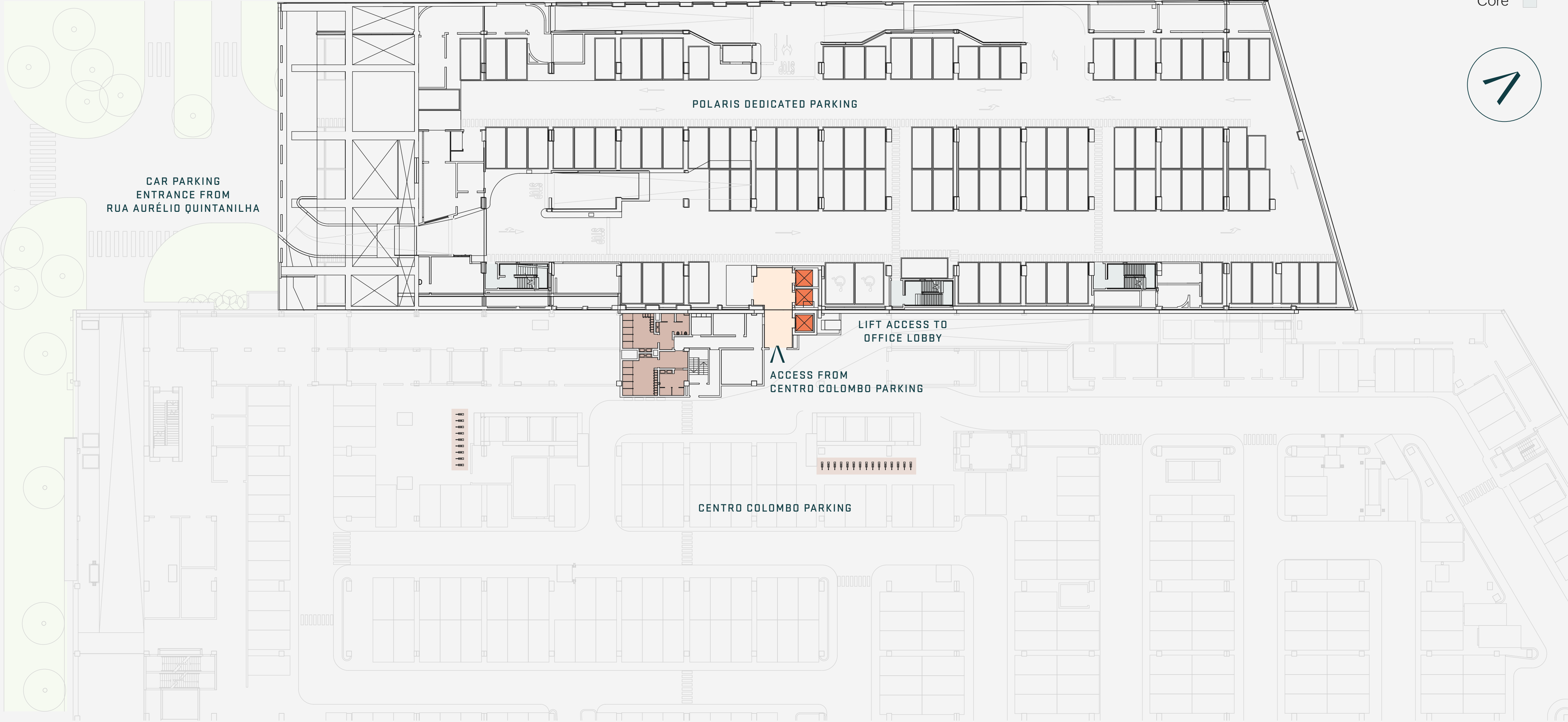




# 1st Basement Parking

SPACES  
101

- Parking Lobby
- Changing Rooms and Lockers
- Bicycle Parking
- Lifts
- Landscaping
- Core





# 2nd Basement Parking

SPACES  
157

Parking Lobby  
Lifts  
Landscaping  
Core



For indicative purposes only.

0 10 20 meters

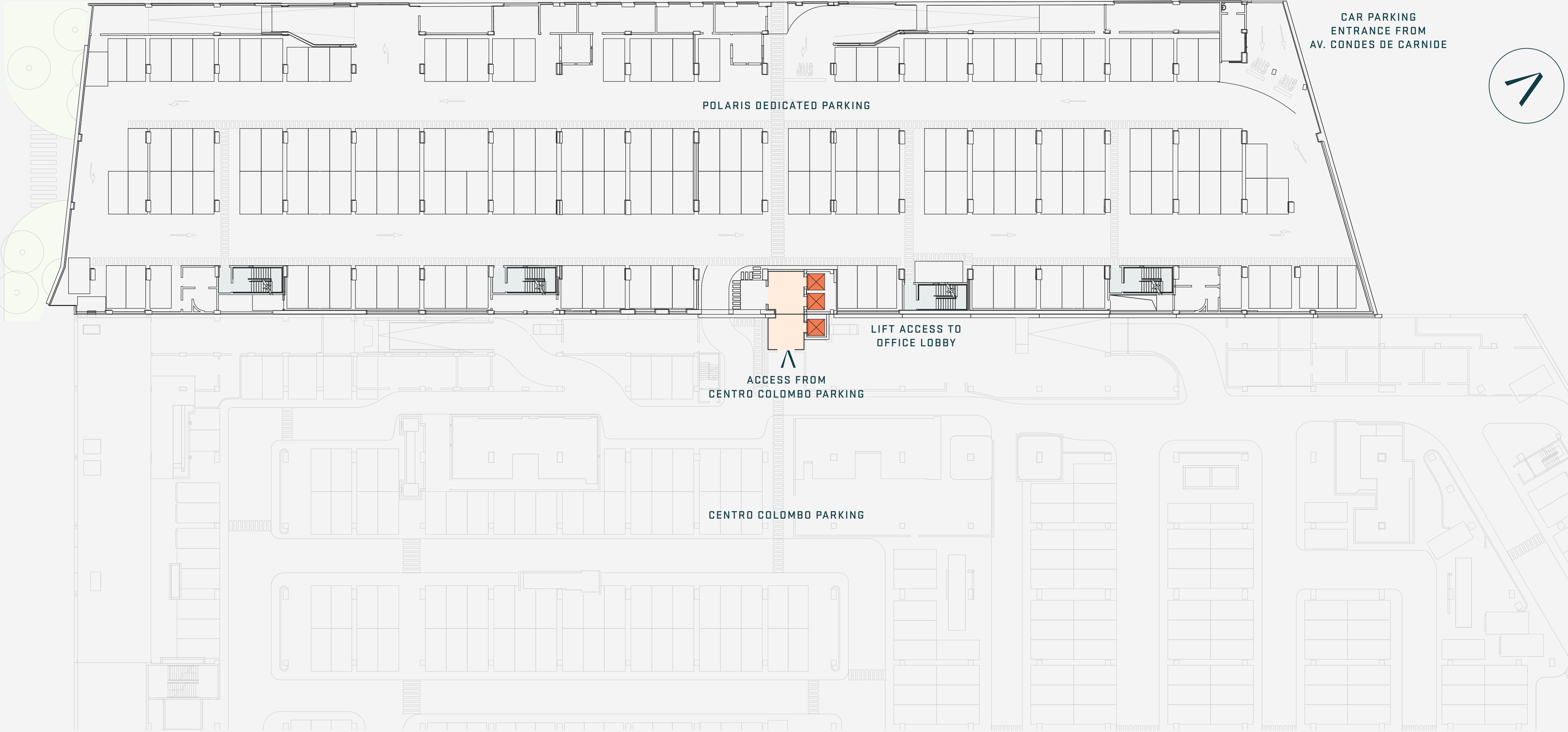




# 3rd Basement Parking

SPACES  
170

- Parking Lobby
- Lifts
- Landscaping
- Core





# POLARIS

THE WORKPLACE FOR CONNECTION

**CBRE**

António Ortigão Ramos  
antonio.ortigaoramos@cbre.com  
+351 910 375 773

António Almeida Ribeiro  
antonio.ribeiro@cbre.com  
+351 912 340 090

**JLL**

Bernardo Vasconcelos  
Bernardo.vasconcelos@jll.com  
+351 915 421 647

[polarislisbon.com](http://polarislisbon.com)

This document consists of a presentation of the general characteristics of the project "POLARIS", regarding its architectural and commercial features. Any graphic or written information presented in this document refers to the current stage of the project, and may be changed due to licensing matters or development issues that may come up during the following phase. AXA, Sonae Sierra and directly or indirectly related entities shall not be held liable, by any means and in any context, for any differences between the final outcome of the project and the elements presented in this document that the recipients may accept and recognize.